

CLIMATE DRIVES MID-OCEAN
RIDGE MAGMATISM?

FISH EVOLVED QUICKLY
AFTER EARTHQUAKE


COOLER WEATHER GREETED
VIKINGS IN GREENLAND

EARTH

Walking in the Footsteps of Giants

May 2016

www.earthmagazine.org

 **AGI** american
geosciences
institute
connecting earth, science, and people

EARTH

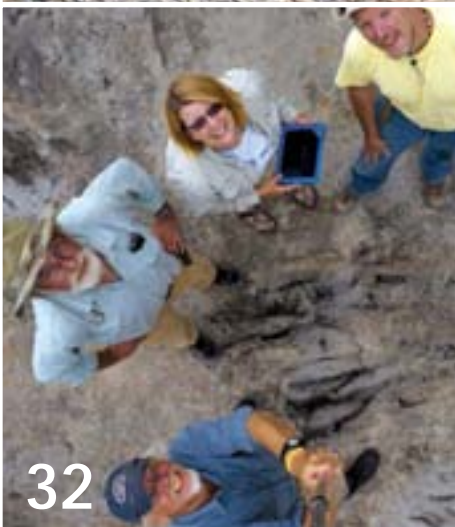
FEATURES



24 | READING THE RIDGES:

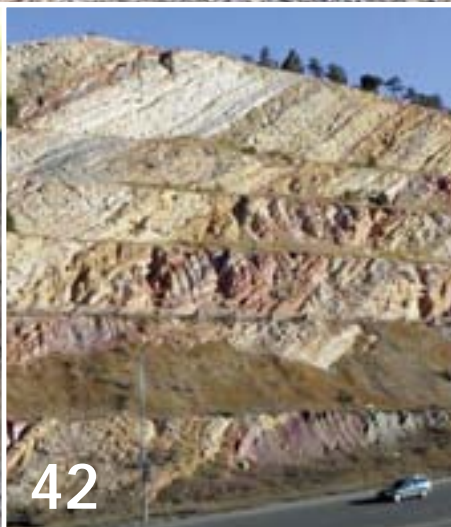
Are Climate and the Seafloor Connected?

New research suggests that mid-ocean ridge volcanoes respond to variations in sea level, potentially leaving topographic records of past glaciations in the form of abyssal hills. But could those volcanoes also influence the climate cycles that drive sea-level changes? | [Julia Rosen](#)



32 | MAKING TRACKS THROUGH THE DINOSAUR DIAMOND

The Dinosaur Diamond scenic byway is an 824-kilometer-long dinosaur fossil- and trackway-sightseeing extravaganza. Follow the route through Utah and Colorado to traverse the Late Triassic through the Cretaceous. | [Martin Lockley](#)



42 | TRAVELS IN GEOLOGY:

Discovering Denver's Dinosaurs

A rich paleontological legacy makes Denver, Colo., one of the best places in the world to learn about dinosaurs, with numerous fossils and trackways at sites nearby. | [Terri Cook](#)

VOICES

8 COMMENT:

GAVRT: Learning Science by Doing Science

Students from kindergarten through high school have an opportunity to operate the Goldstone Apple Valley Radio Telescope, helping them learn science by participating in real scientific campaigns. | [Steven M. Levin](#)

64 GEOLOGIC COLUMN:

May: Nature's Forces in Collision

Throughout history, May 1 has probably had more festivals and events associated with it than any other day of the year, from celebrations of spring and fertility to a day of protest for workers' rights. | [John Copeland](#)

NEWS

- 12 FOSSIL LEAVES PROVIDE CLUES TO ANCIENT AUSTRALIAN HABITAT
- 13 CHINA'S RED DEER CAVE PEOPLE MAY HAVE SURVIVED UNTIL THE LAST ICE AGE
- 13 THE SOFTER SIDE OF HYDROTHERMAL VENTS
- 14 HUMANS EVOLVED EARLY TO BE MORE EFFICIENT SLEEPERS
- 15 MAGNESIUM PART OF EARTH'S MAGNETIC FIELD ENGINE
- 16 MERCURY LEVELS SUPPORT VOLCANIC ROLE IN END-CRETACEOUS EXTINCTION



- 17 TURTLE FINDS LOWER ALTIPLANO ELEVATION ESTIMATE
- 18 FISH EVOLVED QUICKLY AFTER EARTHQUAKE
- 18 LOOKING FOR LIFE IN COLDEST, DRIEST ANTARCTICA
- 19 GROWTH RINGS IN ROCKS REVEAL PAST CLIMATE



- 20 DID THE MEDIEVAL WARM PERIOD WELCOME VIKINGS TO GREENLAND?
- 21 FIRST ALL-DIGITAL GEOLOGIC MAP OF ALASKA RELEASED
- 22 "HOT JUPITER" ATMOSPHERES COME INTO FOCUS
- 22 RED PLANET ROUNDUP

DEPARTMENTS

- 4 FROM THE EDITOR
- 6 PERSPECTIVES
- 48 GEOMEDIA: PERFORMANCE: Bella Gaia Is a Show in Orbit and Earth Is the Star
- 50 CROSS-SECTION: A Puzzle
- 51 WHERE ON EARTH?
- 54 DOWN TO EARTH: With Ethnogeologist Steven Semken
- 57 BENCHMARKS: MAY 12, 1905: Andrew Carnegie Donates "Dippy the Dino"
- 61 CLASSIFIEDS: Career Opportunities

